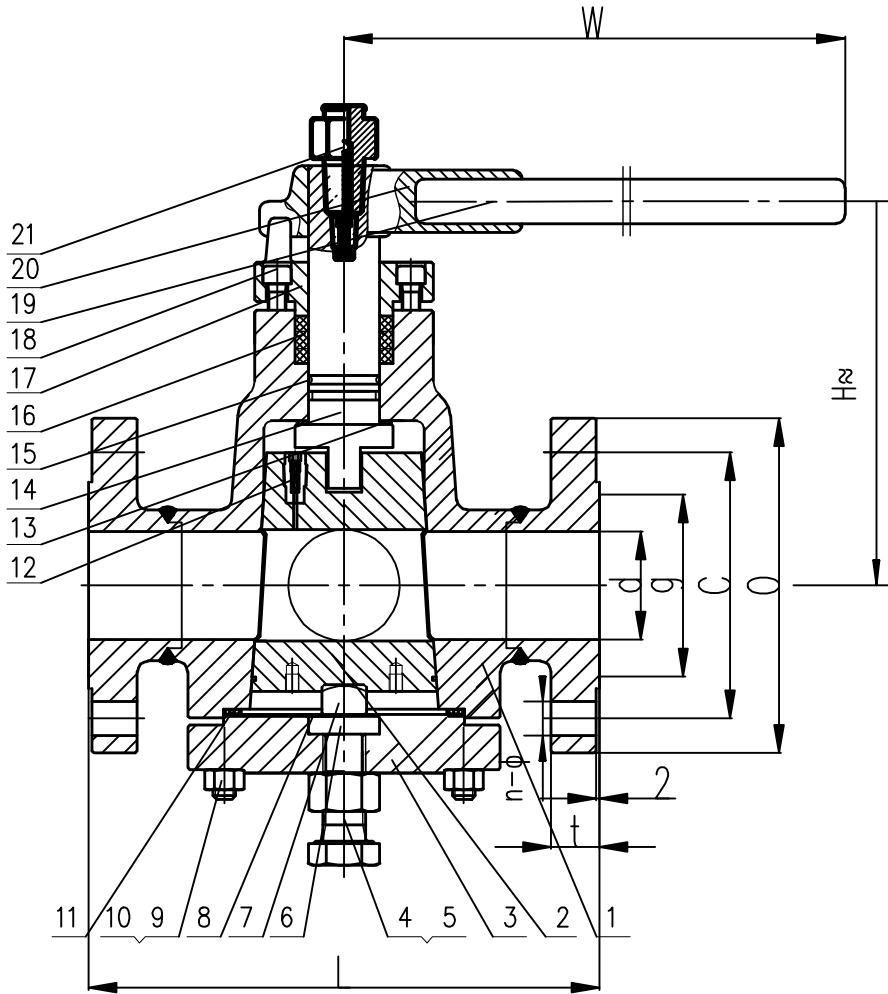


ITEM 1
ITEM 2



Performance Standard			
Class		300	
Test Pre- ssure	Shell Test	7.7	MPa
	Seal Test	5.62	
	Air Test	0.6	
Suitable Temp.		≤80	°C
Suitable Medium:		W.O.G	

Technical Requirements

1. Design & manufacture conform to API 6D.
2. Test & Inspect conform to API 598.
3. Face to Face dimension conform to ASME B16.10.
4. Flange dimension conform to ASME B16.5.
5. Pressure-Temperature ration to ASME B16.34.
6. Fire safe conform to API 6FA.

11	Wind gasket	SS304+Graphite		
10	Nut	A194 2H	21	Grease Fitting UCA
9	Bolt	A193 B7	20	Pipe A570
8	Metal diaphragm	SS304	19	Handhold ASTM A120
7	Adjustable block	A276 410	18	Bolt A193 B7
6	Adjustable block	A276 410	17	Gland A216 WCB
5	Nut	A194 2H	16	Packing PTFE
4	Bolt	A193 B7	15	"O"Ring Viton
3	Cover	ASTM A105	14	Stem A182 F6a
2	Plug	A276 410+Nitridation	13	Gasket PTFE
1	Body	ASTM A105	12	Check valve UCA
No.	Name	Material	No.	Name Material

ITEM	NPS	d	L	O	C	g	t	n-φ	H	W
1	1/2	13	140	95	66.7	35	14.7	2-16&2-1/2	140	315
2	3/4	19	140	115	82.6	43	16.3	2-19&2-5/8	140	315

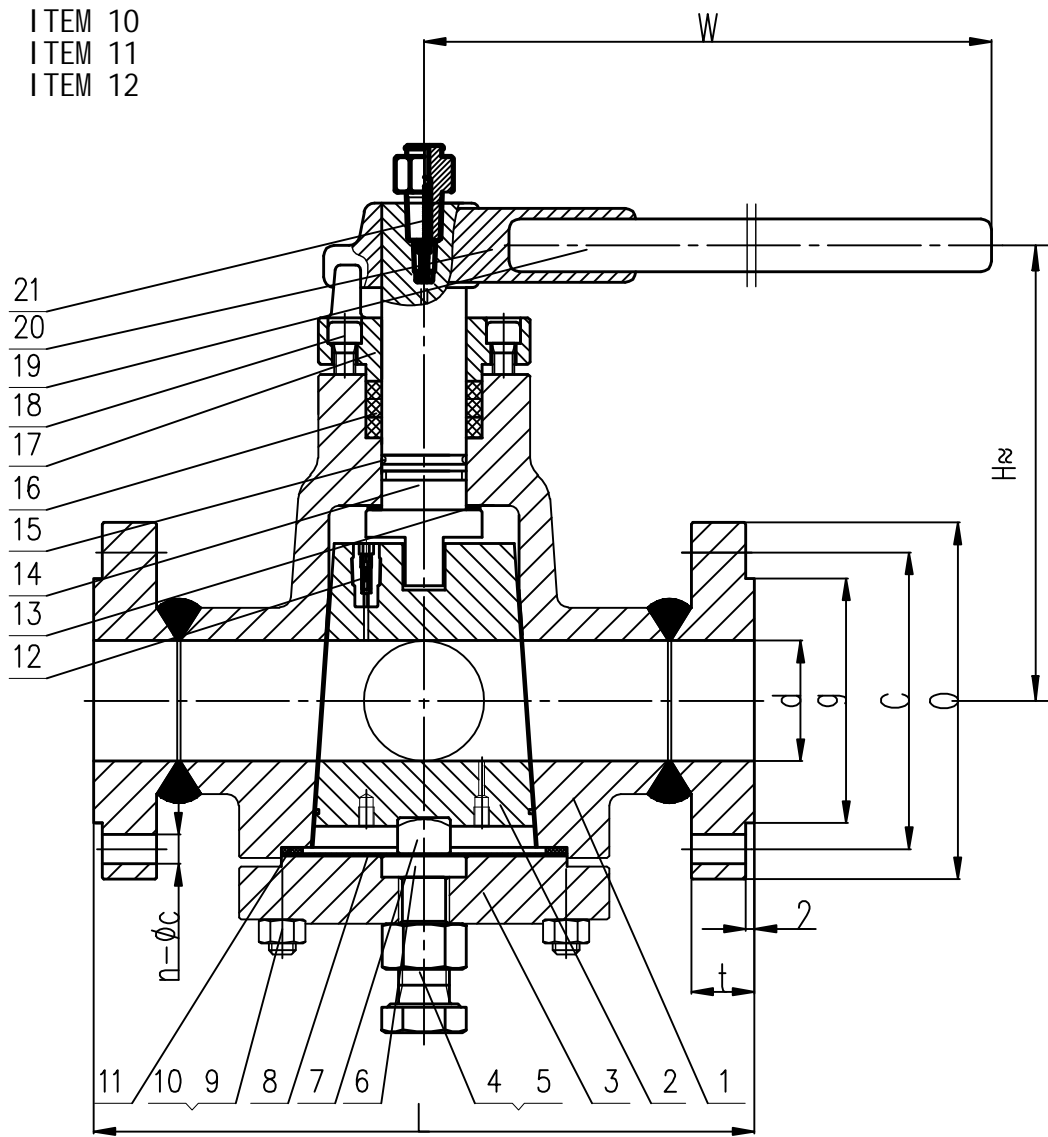
BODY:A105 PLUG:A276 410+Nitridation TRIM:SS410

Assembling

SKVAL VALVE

X47W-CL300(RF)

ITEM 10
ITEM 11
ITEM 12



Performance Standard			
Class		300	
Test Pressure	Shell Test	7.7	MPa
	Seal Test	5.62	
	Air Test	0.6	
Suitable Temp.		≤80	°C
Suitable Medium:		W.O.G	

Technical Requirements

1. Design & manufacture conform to API 6D.
2. Test & Inspect conform to API 598.
3. Face to Face dimension conform to ASME B16.10.
4. Flange dimension conform to ASME B16.5.
5. Pressure-Temperature ration to ASME B16.34.
6. Fire safe conform to API 6FA.

11	Wind gasket	SS304+Graphite		
10	Nut	A194 8	21	Oil nozzle
9	Bolt	A193 B8	20	Pipe
8	Metal diaphragm	SS304	19	Handhold
7	Adjustable block	A276 304	18	Bolt
6	Adjustable block	A276 304	17	Gland
5	Nut	A194 8	16	Packing
4	Bolt	A193 B8	15	"O"Ring
3	Cover	A182 F304	14	Stem
2	Plug	A182 F304L+N	13	Gasket
1	Body	A182 F304L	12	Check valve
No.	Name	Material	No.	Name
				Material

TEM	NPS	d	L	O	C	g	t	n-φ	H	W
1	1/2	13	140	95	66.7	35	14.7	2-16&2-1/2	135	315
2	3/4	19	140	115	82.6	43	16.3	2-19&2-5/8	135	315
3	1 1/2	38	190	155	114.3	73	21.1	4-22	135	415

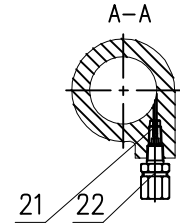
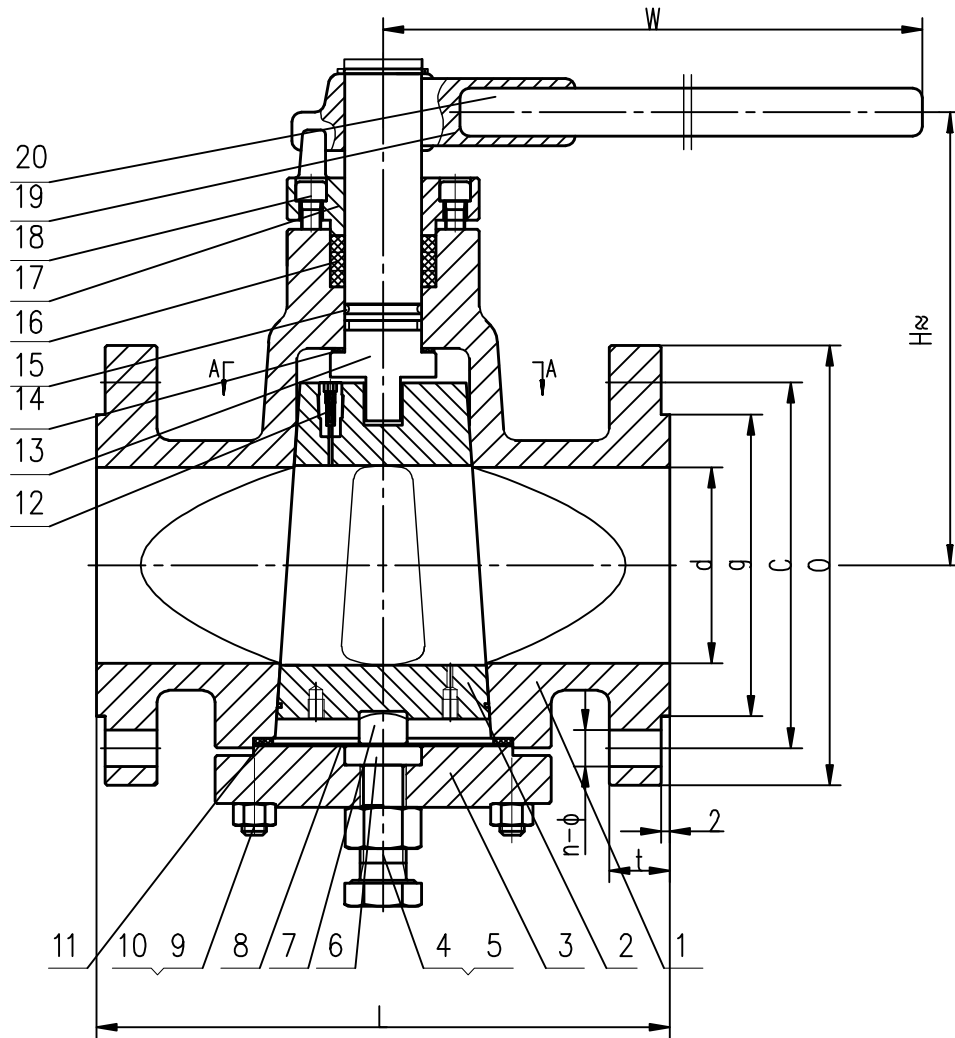
BODY:A182 F304L PLUG:A182 F304L+N TRIM:SS304

Assembling

SKVAL VALVE

X47W-CL300(RF)

ITEM 13



Performance Standard			
Class		150	
Test Pre- ssure	Shell Test	3.0	MPa
	Seal Test	2.2	
	Air Test	0.6	
Suitable Temp.		≤80	°C
Suitable Medium:		W.O.G	

Technical Requirements

1. Design & manufacture conform to API 6D.
2. Test & Inspect conform to API 598.
3. Face to Face dimension conform to ASME B16.10.
4. Flange dimension conform to ASME B16.5.
5. Pressure-Temperature ration to ASME B16.34.
6. Fire safe conform to API 6FA.

11	Wind gasket	SS316+Graphite	22	Grease Fitting	UCA
10	Nut	A194 8	21	Check valve	UCA
9	Bolt	A193 B8	20	Handhold	ASTM A120
8	Metal diaphragm	SS304	19	Pipe	A570
7	Adjustable block	A276 304	18	Bolt	A193 B8
6	Adjustable block	A276 304	17	Gland	A351 CF8
5	Nut	A194 8	16	Packing	Graphite
4	Bolt	A193 B8	15	"O"Ring	Viton
3	Cover	A351 CF3	14	Gasket	PTFE
2	Plug	A351 CF3+N	13	Stem	A182 F304L
1	Body	A351 CF3	12	Check valve	UCA
No.	Name	Material	No.	Name	Material

BODY: A351 CF3 PLUG: ASTM A351 CF3+N TRIM: SS304

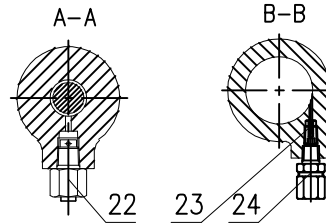
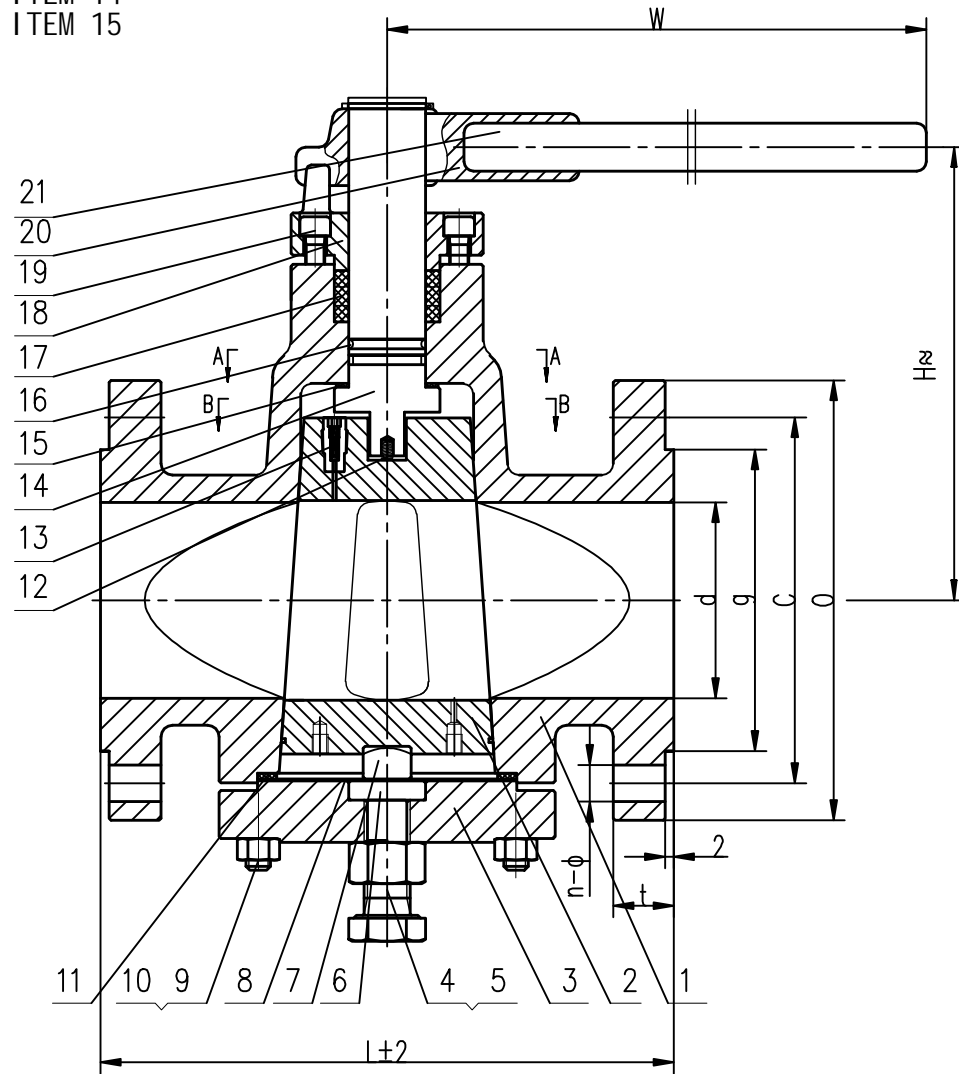
Assembling

SKVAL VALVE

X47W-150LB(RF)

ITEM	NPS	d	L	O	C	g	t	n-φ	H	W
8	2	49	178	150	120.7	92	16.3	4-19	195	480

ITEM 14
ITEM 15



Performance Standard			
Class		150	
Test Pressure	Shell Test	3.0	MPa
	Seal Test	2.2	
	Air Test	0.6	
Suitable Temp.		≤80	°C
Suitable Medium:		W.O.G	

Technical Requirements

1. Design & manufacture conform to API 6D.
2. Test & Inspect conform to API 598.
3. Face to Face dimension conform to ANSI 16.10.
4. Flange dimension conform to ASME B16.5.
5. Pressure-Temperature ration to ASME B16.34.
6. Fire safe conform to API 6FA.

12	Spring	SS304	24	Grease Fitting	UCA
11	Wind gasket	SS316+Graphite	23	Check valve	UCA
10	Nut	A194 8	22	Emergency Device	UCA
9	Bolt	A193 B8	21	Handhold	ASTM A120
8	Metal diaphragm	SS304	20	Pipe	A570
7	Adjustable block	A276 304	19	Bolt	A193 B8
6	Adjustable block	A276 304	18	Gland	A351 CF8
5	Nut	A194 8	17	Packing	Graphite
4	Bolt	A193 B8	16	"O"Ring	Viton
3	Cover	A351 CF3	15	Gasket	PTFE
2	Plug	A351 CF3+N	14	Stem	A182 F304L
1	Body	A351 CF3	13	Check valve	UCA
No.	Name	Material	No.	Name	Material

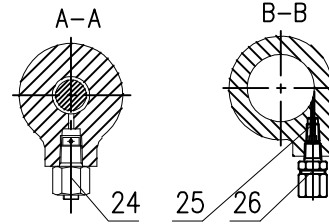
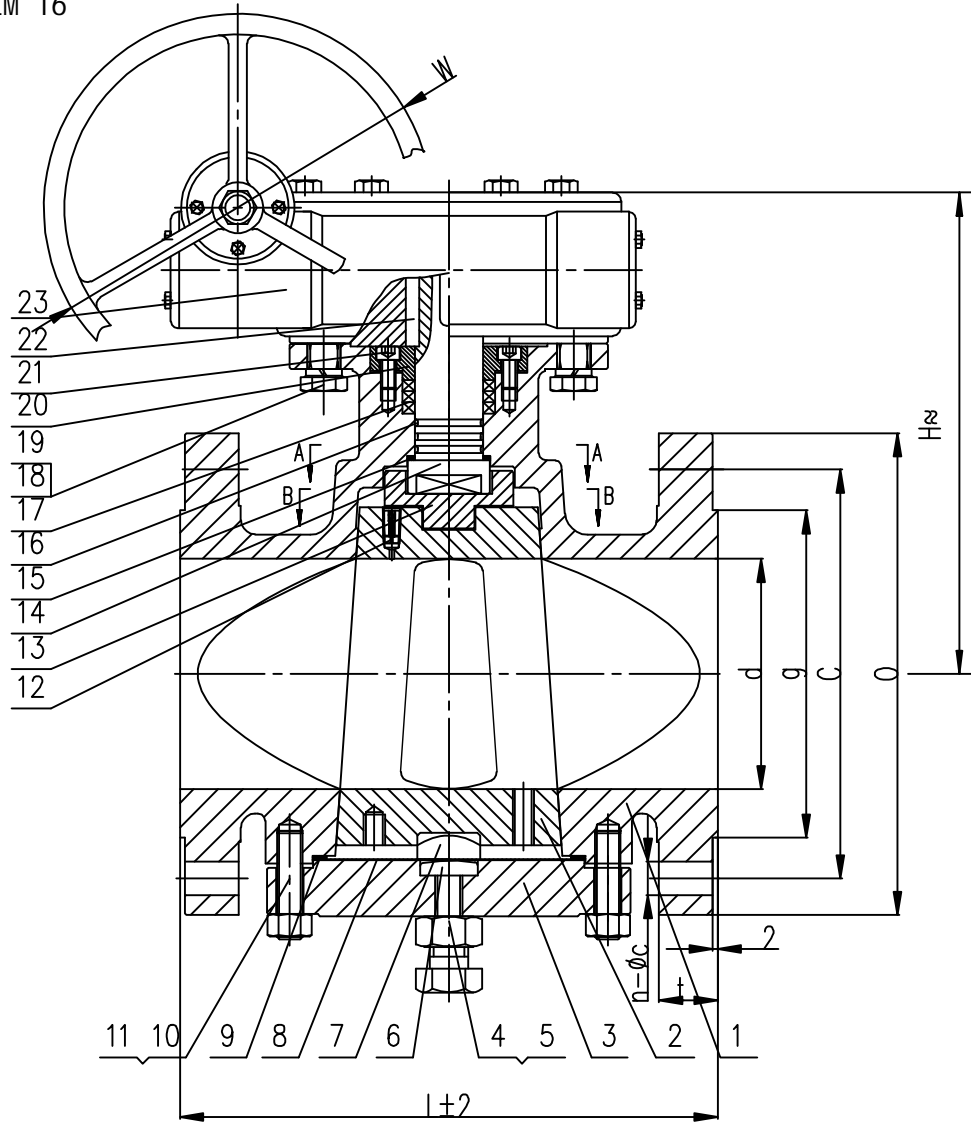
BODY:A351 CF3 PLUG:A351 CF3+N TRIM:SS304

ITEM	NPS	d	L	O	C	g	t	n-φ	H	W
9	3	74	203	190	152.5	127	19.5	4-19	205	540
10	4	100	229	230	190.5	157	24.3	8-19	245	640

SKVAL VALVE

Assembling
X47W-150(RF)

ITEM 16



Performance Standard			
Class		150	
Test Pre- ssure	Shell Test	3.0	MPa
	Seal Test	2.2	
	Air Test	0.6	
Suitable Temp.		≤80	°C
Suitable Medium:		W.O.G	

Technical Requirements

1. Design & manufacture conform to API 6D.
2. Test & Inspect conform to API 598.
3. Face to Face dimension conform to ASME B16.10.
4. Flange dimension conform to ASME B16.5.
5. Pressure-Temperature ration to ASME B16.34.
6. Fire safe conform to API 6FA.

13	Articulated Joint	17-4PH	26	Grease Fitting	UCA
12	Check Valve	UCA	25	Check Valve	UCA
11	Bolt	A193 B8	24	Emergency Device	UCA
10	Nut	A194 8	23	Worm-gear Actuator	UCA
9	Wind gasket	SS316+Graphite	22	Key	AISI 1045
8	Metal diaphragm	SS304	21	Bolt	A193 B8
7	Adjustable block	A276 304	20	Gland	A182 F304
6	Adjustable block	A276 304	19	Spring Washer	SS304
5	Bolt	A193 B8	18	Bolt	A193 B8
4	Nut	A194 8	17	Packing	Graphite
3	Cover	A351 CF3	16	O-Ring	Viton
2	Plug	A351 CF3+N	15	Gasket	PTFE
1	Body	A351 CF3	14	Stem	17-4PH
Item	Part Name	Material	Item	Part Name	Material

BODY: A351 CF3 PLUG: A351 CF3+N TRIM: SS304

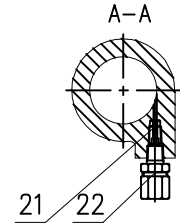
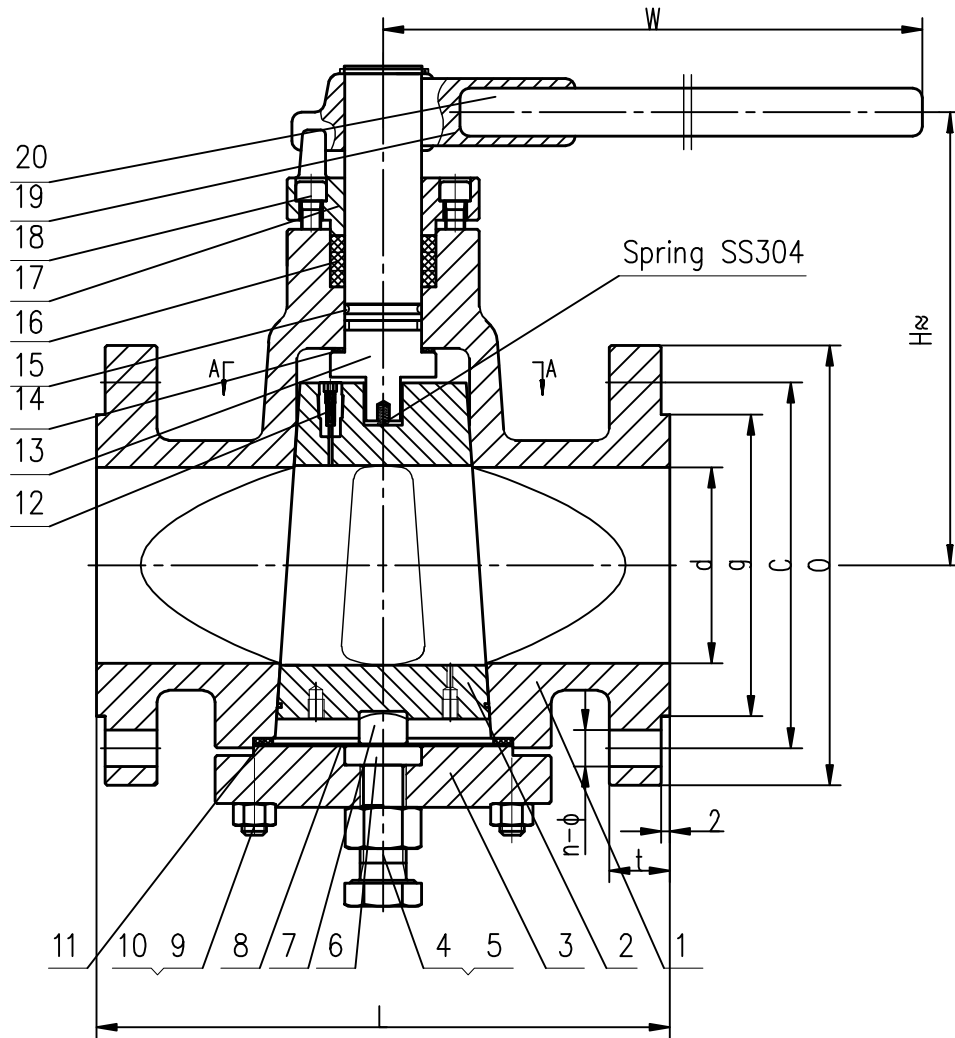
Assembling

SKVAL VALVE

X347W-150LB(RF)

NPS	d	L	O	C	g	t	n-φ	H	W
8	201	292	345	298.5	270	29	6-22&2-3/4"	400	400

ITEM 3



Performance Standard			
Class		150	
Test Pre- ssure	Shell Test	3.0	MPa
	Seal Test	2.2	
	Air Test	0.6	
Suitable Temp.		≤80	°C
Suitable Medium:		W.O.G	

Technical Requirements

1. Design & manufacture conform to API 6D.
2. Test & Inspect conform to API 598.
3. Face to Face dimension conform to ASME B16.10.
4. Flange dimension conform to ASME B16.5.
5. Pressure-Temperature ration to ASME B16.34.
6. Fire safe conform to API 6FA.

11	Wind gasket	SS304+Graphite	22	Grease Fitting	UCA
10	Nut	A194 2H	21	Check valve	UCA
9	Bolt	A193 B7	20	Handhold	ASTM A120
8	Metal diaphragm	SS304	19	Pipe	A570
7	Adjustable block	A276 410	18	Bolt	A193 B7
6	Adjustable block	A276 410	17	Gland	A216 WCB
5	Nut	A194 2H	16	Packing	Graphite
4	Bolt	A193 B7	15	"O"Ring	Viton
3	Cover	A216 WCB	14	Gasket	PTFE
2	Plug	A217 CA15+N	13	Stem	A182 F6a
1	Body	A216 WCB	12	Check valve	UCA
No.	Name	Material	No.	Name	Material

BODY: A216 WCB PLUG: A217 CA15+N TRIM: SS410

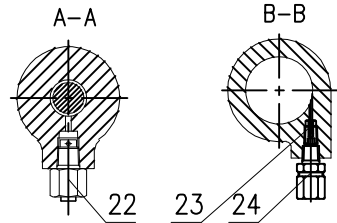
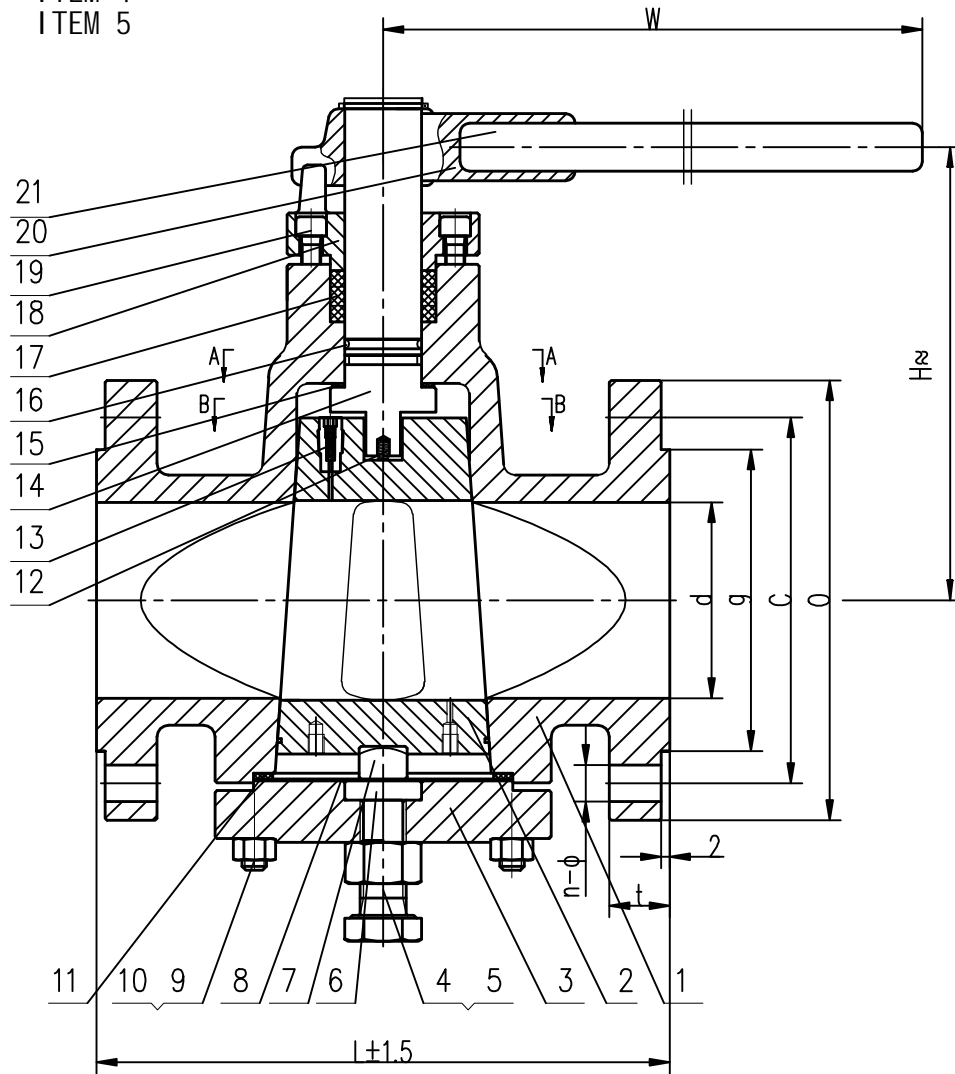
Assembling

SKVAL VALVE

X47W-CL150(RF)

ITEM	NPS	d	L	O	C	g	t	n-φ	H	W
1	2	49	178	150	120.5	92	16.3	4-19	165	480

ITEM 4
ITEM 5



Performance Standard			
Class		150	
Test Pre- ssure	Shell Test	3.0	MPa
	Seal Test	2.2	
	Air Test	0.6	
Suitable Temp.		≤80	°C
Suitable Medium:		W.O.G	

Technical Requirements

1. Design & manufacture conform to API 6D.
2. Test & Inspect conform to API 598.
3. Face to Face dimension conform to ASME B16.10.
4. Flange dimension conform to ASME B16.5.
5. Pressure-Temperature ration to ASME B16.34.
6. Fire safe conform to API 6FA.

12	Spring	SS304	24	Grease Fitting	UCA
11	Wind gasket	SS304+Graphite	23	Check valve	UCA
10	Nut	A194 2H	22	Emergency Device	UCA
9	Bolt	A193 B7	21	Handhold	ASTM A120
8	Metal diaphragm	SS304	20	Pipe	A570
7	Adjustable block	A276 410	19	Bolt	A193 B7
6	Adjustable block	A276 410	18	Gland	A216 WCB
5	Nut	A194 2H	17	Packing	Graphite
4	Bolt	A193 B7	16	"O"Ring	Viton
3	Cover	A216 WCB	15	Gasket	PTFE
2	Plug	A217 CA15+N	14	Stem	A182 F6a
1	Body	A216 WCB	13	Check valve	UCA
No.	Name	Material	No.	Name	Material

BODY:A216 WCB PLUG:A217 CA15+N TRIM:SS410

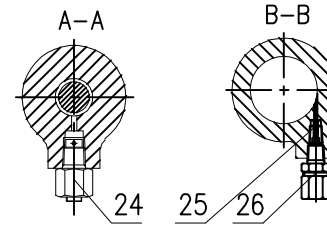
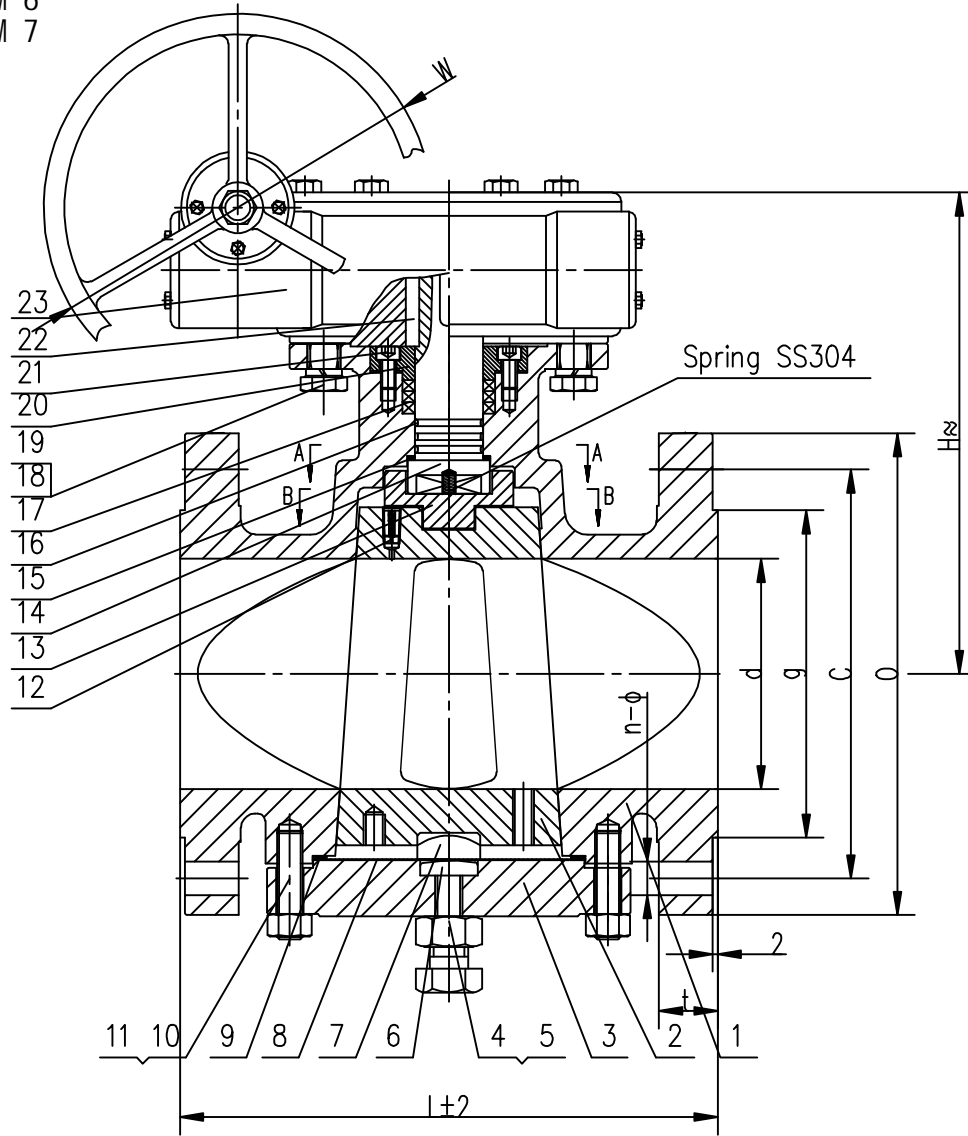
Assembling

SKVAL VALVE

X47W-CL150(RF)

ITEM	NPS	d	L	O	C	g	t	n-φ	H	W
2	3	74	203	190	152.5	127	19.5	4-19	205	540
3	4	100	229	230	190.5	157	24.3	8-19	245	640

ITEM 6
ITEM 7



Performance Standard			
Class		150	
Test Pre- ssure	Shell Test	3.0	MPa
	Seal Test	2.2	
	Air Test	0.6	
Suitable Temp.		≤80	°C
Suitable Medium:		W.O.G	

Technical Requirements

1. Design & manufacture conform to API 6D.
2. Test & Inspect conform to API 598.
3. Face to Face dimension conform to ASME B16.10.
4. Flange dimension conform to ASME B16.5.
5. Pressure-Temperature ration to ASME B16.34.
6. Fire safe conform to API 6FA.

13	Articulated Joint	A276 410	26	Grease Fitting	UCA
12	Check Valve	UCA	25	Check Valve	UCA
11	Bolt	A193 B7	24	Emergency Device	UCA
10	Nut	A194 2H	23	Worm-gear Actuator	UCA
9	Wind gasket	SS304+Graphite	22	Key	AISI 1045
8	Metal diaphragm	SS304	21	Bolt	A193 B7
7	Adjustable block	A276 410	20	Gland	A216 WCB
6	Adjustable block	A276 410	19	Spring Washer	AISI 1566
5	Bolt	A193 B7	18	Bolt	A193 B7
4	Nut	A194 2H	17	Packing	Graphite
3	Cover	A216 WCB	16	O-Ring	Viton
2	Plug	A217 CA15+N	15	Gasket	PTFE
1	Body	A216 WCB	14	Stem	A182 F6a
Item	Part Name	Material	Item	Part Name	Material

ITEM	NPS	d	L	O	C	g	t	n-φ	H	W
1	6	150	267	280	241.3	216	26	6-22&2-3/4	345	400
2	8	201	292	345	298.5	270	29	6-22&2-3/4	350	400

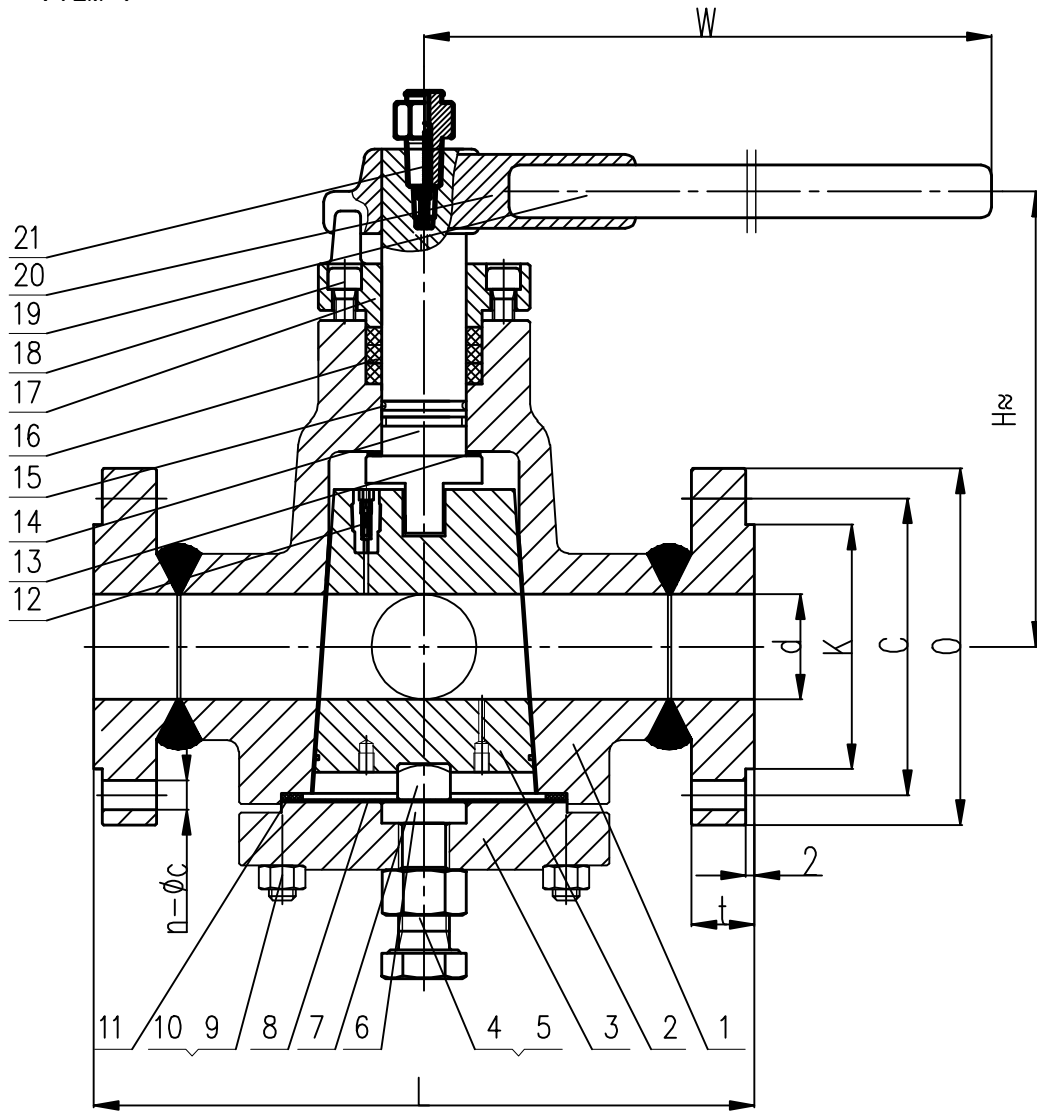
BODY:A216 WCB PLUG:ASTM A217 CA15+N TRIM:SS410

Assembling

SKVAL VALVE

X347W-CL150(RF)

ITEM 8
ITEM 9



Performance Standard			
Class		300	
Test Pressure	Shell Test	7.7	MPa
	Seal Test	5.62	
	Air Test	0.6	
Suitable Temp.		≤80	°C
Suitable Medium:		W.O.G	

Technical Requirements

1. Design & manufacture conform to API 6D.
2. Test & Inspect conform to API 598.
3. Face to Face dimension conform to ASME B16.10
4. Flange dimension conform to ASME B16.5.
5. Pressure-Temperature ration to ASME B16.34.
6. Fire safe conform to API 6FA.

11	Wind gasket	SS304+Graphite			
10	Nut	A194 2H	21	Oil nozzle	
9	Bolt	A193 B7	20	Pipe	
8	Metal diaphragm	SS304	19	Handhold	
7	Adjustable block	A276 410	18	Bolt	
6	Adjustable block	A276 410	17	Gland	
5	Nut	A194 2H	16	Packing	
4	Bolt	A193 B7	15	"O"Ring	
3	Cover	ASTM A105	14	Stem	
2	Plug	A276 410+Nitriding	13	Gasket	
1	Body	ASTM A105	12	Check valve	
No.	Name	Material	No.	Name	Material

BODY:A105 PLUG:A276 410+Nitriding STEM:SS410

NPS	d	L	O	C	K	t	n-φ	W	H
1	25	159	125	88.9	51	18	2-19&2-5/8	415	140
11/2	38	190	155	114.3	73	21.1	4-22	415	150

SKVAL VALVE

Assembling

X47W-CL300(RF)